

TECPR1 Antibody (C-term)
Purified Rabbit Polyclonal Antibody (Pab)
Catalog # AP7391b**Specification**

TECPR1 Antibody (C-term) - Product Information

Application	IHC-P, FC, WB,E
Primary Accession	Q7Z6L1
Reactivity	Human
Host	Rabbit
Clonality	Polyclonal
Isotype	Rabbit IgG
Calculated MW	129696
Antigen Region	1094-1122

TECPR1 Antibody (C-term) - Additional Information**Gene ID** 25851**Other Names**

Tectonin beta-propeller repeat-containing protein 1, TECPR1, KIAA1358

Target/Specificity

This TECPR1 antibody is generated from rabbits immunized with a KLH conjugated synthetic peptide between 1094-1122 amino acids from the C-terminal region of human TECPR1.

Dilution

IHC-P~~1:100

FC~~1:10~50

WB~~1:500

E~~Use at an assay dependent concentration.

Format

Purified polyclonal antibody supplied in PBS with 0.09% (W/V) sodium azide. This antibody is purified through a protein A column, followed by peptide affinity purification.

Storage

Maintain refrigerated at 2-8°C for up to 2 weeks. For long term storage store at -20°C in small aliquots to prevent freeze-thaw cycles.

Precautions

TECPR1 Antibody (C-term) is for research use only and not for use in diagnostic or therapeutic procedures.

TECPR1 Antibody (C-term) - Protein Information**Name** TECPR1

Synonyms KIAA1358

Function Tethering factor involved in autophagy. Involved in autophagosome maturation by promoting the autophagosome fusion with lysosomes: acts by associating with both the ATG5-ATG12 conjugate and phosphatidylinositol-3-phosphate (PtdIns(3)P) present at the surface of autophagosomes. Also involved in selective autophagy against bacterial pathogens, by being required for phagophore/preautophagosomal structure biogenesis and maturation.

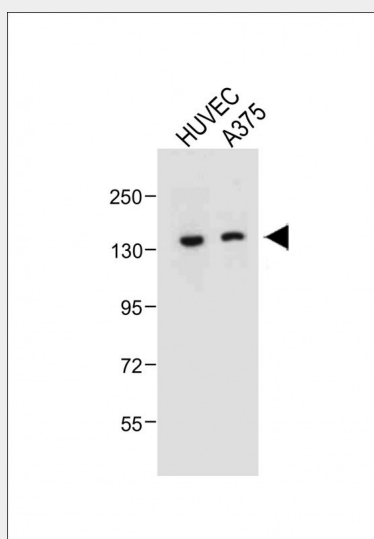
Cellular Location

Cytoplasmic vesicle, autophagosome membrane. Lysosome membrane. Note=Localizes to Lysosome membranes, and binds PtdIns(3)P at the surface of autophagosome. Localizes to autolysosomes, a vesicle formed by the fusion between autophagosomes and lysosomes

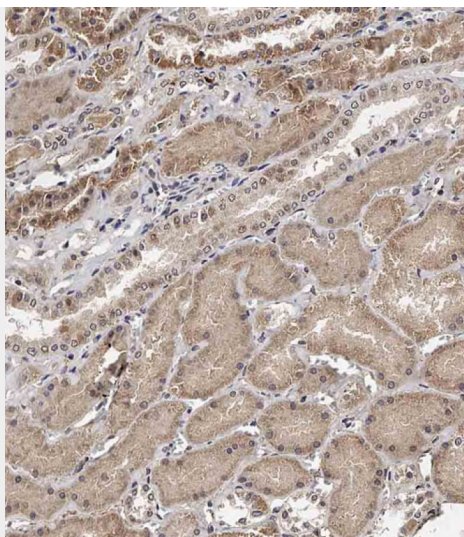
TECPR1 Antibody (C-term) - Protocols

Provided below are standard protocols that you may find useful for product applications.

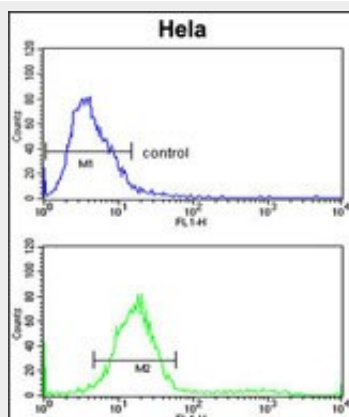
- [Western Blot](#)
- [Blocking Peptides](#)
- [Dot Blot](#)
- [Immunohistochemistry](#)
- [Immunofluorescence](#)
- [Immunoprecipitation](#)
- [Flow Cytometry](#)
- [Cell Culture](#)

TECPR1 Antibody (C-term) - Images

All lanes : Anti-TECPR1 Antibody (C-term) at 1:500 dilution Lane 1: HUVEC whole cell lysate Lane 2: A375 whole cell lysate Lysates/proteins at 20 µg per lane. Secondary Goat Anti-Rabbit IgG, (H+L), Peroxidase conjugated at 1/10000 dilution. Predicted band size : 130 kDa Blocking/Dilution buffer: 5% NFDM/TBST.



Immunohistochemical analysis of AP7391b on paraffin-embedded Human kidney tissue. Tissue was fixed with formaldehyde at room temperature. Heat induced epitope retrieval was performed by EDTA buffer (pH9. 0). Samples were incubated with primary antibody(1:100) for 1 hour at room temperature. Undiluted CRF Anti-Polyvalent HRP Polymer antibody was used as the secondary antibody.



TECPR1 Antibody (C-term) (Cat. #AP7391b) flow cytometric analysis of HeLa cells (bottom histogram) compared to a negative control cell (top histogram).FITC-conjugated goat-anti-rabbit secondary antibodies were used for the analysis.